



# We're working in your *neighborhood!*

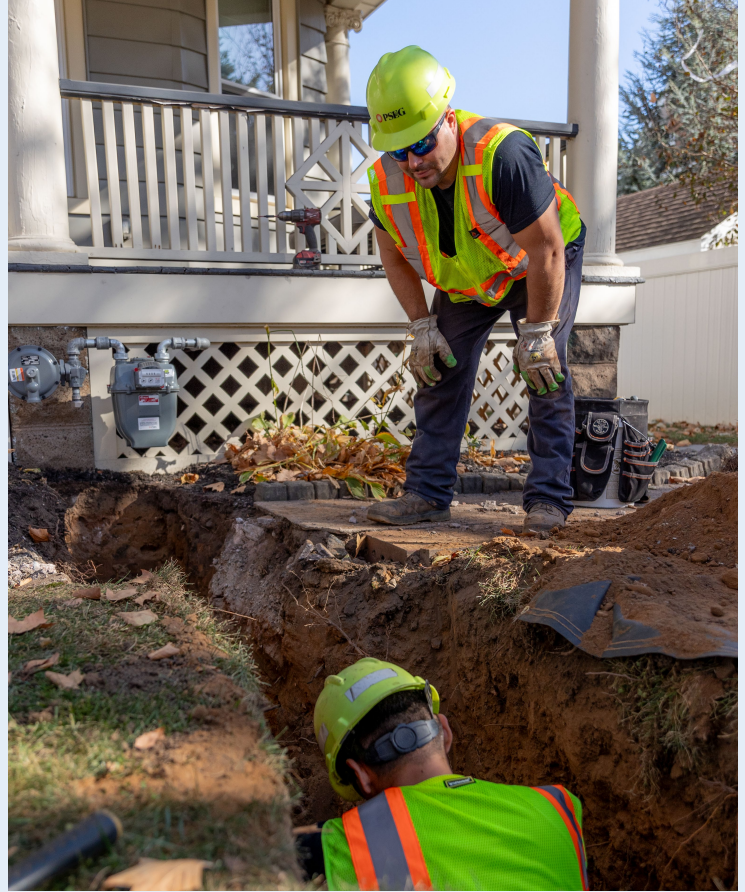
## PSE&G Gas Line Replacements

PSE&G is accelerating the modernization of its aging gas pipes in order to ensure the utility can continue to support a safe and reliable gas system well into the future.

Under the program PSE&G will replace 525 miles of cast iron and unprotected steel gas mains throughout New Jersey by summer 2029.

The mains and services will be replaced with strong, durable plastic piping and/or coated steel, which are much less likely to have leaks and release methane gas. The new elevated pressure systems also enable the installation of excess flow valves that dramatically reduce gas flow if a service line is damaged, and provide better support for the use of high-efficiency appliances.

Like aging roads and bridges, all infrastructure must be maintained – and eventually replaced – to maintain the safety and integrity of the system. Gas infrastructure is no different. We appreciate your patience and cooperation as we complete these important upgrades to our gas system.



### Gas System Modernization Program work phases:

**1 Dig Trench**



**2 Install New Pipes**



**3 Connect Services**



**4 Restore Roads**



## FAQs

### Why is my meter being moved outside?

If your meter is located inside your home, we will relocate it to the outside. This provides easier access for meter reading, inspection and maintenance. It also makes your meter more accessible in case of an emergency.

### During what hours will crews be working?

Typical work hours will take place Monday through Friday between the hours of 7 a.m. to 5 p.m., conditions permitting, with potential for weekend work.

### Is this work dangerous?

Safety is PSE&G's top priority. PSE&G, along with its skilled contractors, will take every measure possible to ensure the safety of the public and our crews while we complete the work. Crews will use work area protection, including traffic cones, utility work signs, and barriers to ensure the work is done safely.

### Who can I contact with questions for more information?

When the work begins, a schedule of work in your town will be available on our website at [www.pseg.com/gaswork](http://www.pseg.com/gaswork). If you have questions while we are doing work in your neighborhood, please email us at [gasworks@pseg.com](mailto:gasworks@pseg.com).

## Follow Us

